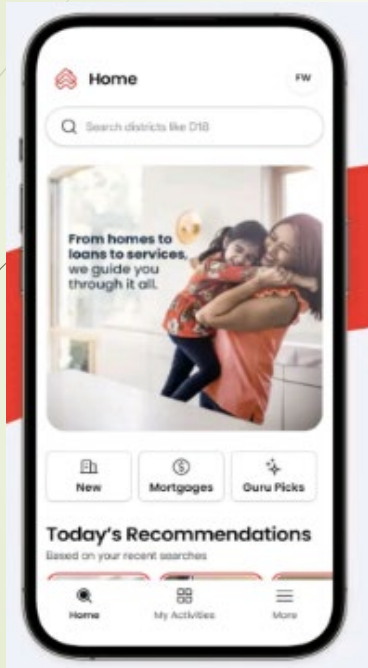


# Student Accommodation Options in Singapore



# PropertyGuru



## Wide Housing Selection

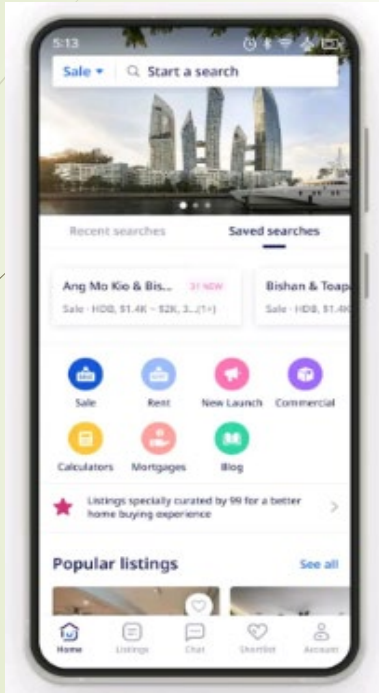
Explore numerous listings including HDB flats, condominiums, and houses to suit different budgets and preferences.

## Customizable Search

Filter properties by price, location, and type to quickly find the best housing options.

## Direct Contact

Communicate directly with landlords or agents to inquire about availability and rental terms.



### **Wide Housing Selection**

Explore numerous listings including HDB flats, condominiums, and houses to suit different budgets and preferences.

### **Customizable Search**

Filter properties by price, location, and type to quickly find the best housing options.

### **Direct Contact**

Communicate directly with landlords or agents to inquire about availability and rental terms.

# Dream Lodge

**Location** Conveniently situated near MRT stations in central Singapore, providing easy access to key city attractions and transport.

**Rent** Female pod beds available from S\$38 to S\$52 per night, offering budget-friendly accommodation for solo female travelers.

**Facilities** Private pod-style beds, complimentary breakfast, and reliable Wi-Fi connectivity ensure comfort and convenience.

**Notable Features** Voted Best Overall Hostel by Nomadic Matt and consistently top-rated by The Broke Backpacker and TripAdvisor.



# Bohemian Hostel Details

## Location

Centrally located in Singapore with easy access to key areas and MRT stations, making travel convenient.

## Facilities

Features colorful decor, a shared kitchen for guest use, complimentary breakfast, and free Wi-Fi throughout.



## Rent

Affordable backpacker pricing; exact rates available on [booking.com](https://www.booking.com) for flexible stay options.

## Notable Features

Known for its social atmosphere with regular events to help travelers connect; highly rated by MakeMyTrip.



# COO Boutique Hostel & Sociatel

01

## Location

Situated in a stylish heritage area close to major city attractions, offering easy access to cultural and entertainment hubs.

02

## Rent

Pricing varies by room type, positioned in the mid-range hostel segment to balance affordability and comfort.

03

## Facilities

Features award-winning design, comfortable lounge areas, shared social spaces, and reliable Wi-Fi connectivity.

04

## Notable Features

Singapore's first Sociatel concept combining hostel and social hotel experiences; prominently featured on Hostelworld, Skyscanner, and Wikipedia.



# Wink at Mosque Street Features

## 01 Location

Situated in Chinatown, central and vibrant with easy access to MRT stations for convenient travel across Singapore.

## 03 Facilities

Comfortable pods, communal lounge, shared kitchen facilities, and free Wi-Fi to enhance guest comfort and socializing.



## 02 Rent

Affordable pod beds available; pricing details can be found on [booking.com](https://www.booking.com) for the most up-to-date rates.

## 04 Notable Features

Named Best for Solo Travelers by The Broke Backpacker, combining privacy with opportunities to meet fellow travelers.



# Fisher BnB



- 01 Location** Situated in a traditional shophouse within a peaceful district, providing a quiet environment away from city noise.
- 02 Rent** Budget-friendly pricing at approximately S\$28 per night, ideal for cost-conscious travelers.
- 03 Facilities** Clean dormitory rooms, complimentary breakfast, and reliable Wi-Fi for convenience and comfort.
- 04 Notable Features** Highly recommended by Travelfish for its standout budget value; cozy and minimalist design perfect for simple stays.

# yo:HA Hostel @ Evans



## **Location & Distance**

Situated at 26 Evans Rd, Singapore 259367, this hostel is approximately 40 minutes from campus, offering easy access to your studies.



## **Affordable Rent**

Starting from just S\$630, it provides budget-friendly housing ideal for students looking to manage costs without sacrificing comfort.



## **Facilities**

Includes Wi-Fi connectivity, a shared kitchen for communal cooking, and a study lounge to support academic needs and social interaction.



## **Contact Information**

Reach out via email at [evans@yoha.com.sg](mailto:evans@yoha.com.sg) or phone at +65 6732 0074 for inquiries and booking details.



# Coliwoo @ Lutheran



## Location & Contact

Address: 1A Lutheran Rd, Singapore 267745. Contact Email: enquiry@coliwoo.com. Phone: +65 9790 8585.

## Rent

Starting from S\$1800, offering competitive pricing for a fully equipped co-living environment.

## Facilities

Includes Wi-Fi, shared kitchen with fridge and BBQ pit, study room, lounge, gym, multipurpose plaza, and shared laundry room.

## Commute Time

Located approximately 40 minutes from campus, providing a balance between city access and residential comfort.

## Community & Lifestyle

Designed for student life with communal spaces encouraging social interaction, study, and recreation in a supportive environment.

# lyf @ Funan



## Address & Location

67 Hill St, Level 4 Funan Mall,  
Singapore 179370.  
Conveniently located with  
easy access to city amenities  
and 35 minutes to campus.



## Rent & Distance

Starting from S\$1900 per  
month. Approximately 35  
minutes travel time to campus  
by public transport or car.



## Services

Includes housekeeping  
and 24/7 concierge  
services ensuring a  
hassle-free living  
experience.



## Facilities

En-suite bathroom, shared lounge, gym, kitchen, self-  
service laundry. Designed for comfort and convenience.



## Contact Details

Email: [sitirosiah.rosli@the-ascott.com](mailto:sitirosiah.rosli@the-ascott.com) | Phone: +65  
9820 1902. Reach out for  
inquiries and bookings.

# Novena Hall International Student's Hostel



## Location

Situated at 78 Gilstead Road, Novena Hall is approximately 40 minutes from campus by public transport, offering accessible commuting options.



## Affordable Rent

Starting at S\$650 per month, Novena Hall provides budget-friendly housing suitable for international students.



## Facilities Provided

Includes Wi-Fi connectivity, a pantry for meals, and housekeeping & laundry services to support comfortable living.



## Contact Information

For inquiries and bookings, contact [sales@novenahall.com.sg](mailto:sales@novenahall.com.sg) or call +65 6352 0580 for prompt assistance.

# Citadines Rochor



## Address and Location

Located at 2 Serangoon Rd, Singapore 218227, Citadines Rochor is conveniently situated for easy access to key city areas and transport.



## Facilities Provided

Enjoy a private bathroom, kitchen with microwave, swimming pool, gym, and comfortable lounge areas for relaxation and study.



## Distance to Campus

Only 35 minutes commute to campus, perfect for students seeking both accessibility and a vibrant neighborhood.



## Additional Services

Housekeeping services available except Sundays and public holidays to maintain a clean and comfortable living space.



## Rent Starting Price

Affordable starting rent from S\$2200, offering value for a quality, fully serviced living environment.



## Contact Information

For inquiries and bookings, contact Ann Wong via email at [ann.wong@the-ascott.com](mailto:ann.wong@the-ascott.com) or phone +65 9040 6086.

# yo:HA Hostel @ Henderson



## **Location & Access**

Located at 98 Henderson Rd, the hostel is approximately 45 minutes from campus, offering a balance between city life and study convenience.

## **Affordable Rent**

Starting from just S\$630 per month, this option provides cost-effective housing for budget-conscious students.

## **Contact Information**

Reach out via email at [henderson@yoha.com.sg](mailto:henderson@yoha.com.sg) or call +65 6275 8880 for inquiries and bookings.

## **Facilities Included**

Enjoy reliable Wi-Fi, a shared kitchen for cooking needs, and a study lounge designed to support academic focus and group work.

# Cove.sg



## **Flexible Lease Terms**

Enjoy flexible lease options tailored for short and long stays, perfect for students with varying schedules and needs.

## **Fully Furnished Rooms**

Move into ready-to-live-in rooms equipped with essential furniture, kitchenware, and high-speed Wi-Fi for convenience and comfort.

## **Trusted Student Community**

Join a vibrant community trusted by over 2,000 students, with regular events and perks that foster connections and support.

## **Comprehensive Amenities**

Access housekeeping, maintenance, fast Wi-Fi, and virtual viewing options to make your stay hassle-free and enjoyable.

## **Contact & Booking**

Reach out via [enquiries@cove.sg](mailto:enquiries@cove.sg) or visit <https://cove.sg/> to explore available homes and book your ideal student accommodation.

# Relogo Coliving



## Flexible Lease Options

Choose short-term leases tailored to your unique schedule, providing convenience and flexibility for your stay in Singapore.



## Verified Listings

All accommodation listings are screened and approved to ensure safety, quality, and reliability for residents.



## Online Booking & Support

Easily search, apply, book, and manage your stay digitally through a user-friendly platform with responsive support.



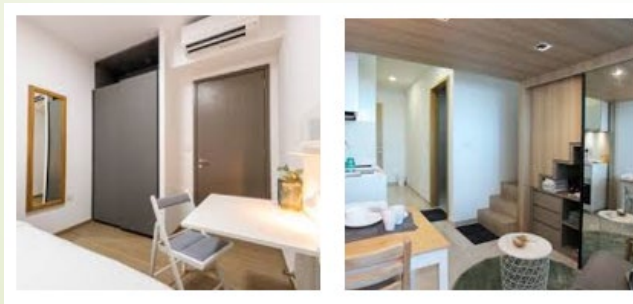
## Payment Protection

Payments are securely held for 24 hours after move-in to protect your transaction and ensure peace of mind.



## 24/7 Customer Service

Dedicated customer service team available around the clock to assist with any accommodation needs or concerns.



# Accommodation Disclaimer

Ngee Ann Academy (NAA) does not provide or manage student accommodation. Any accommodation arrangements made by students are undertaken independently and at their own discretion.

Students are required **to liaise directly** with accommodation providers, landlords, or agents for all matters relating to their accommodation, including but not limited to bookings, tenancy agreements, payments, maintenance, and dispute resolution.

NAA shall not be held responsible or liable for any issues arising from accommodation arrangements, including but not limited to tenancy agreements, disputes with landlords or agents, rental payments, property conditions, or any related matters.

**Students are advised to exercise due diligence before entering into any tenancy agreement and to seek independent legal or professional advice where necessary.**



Thank  
you

